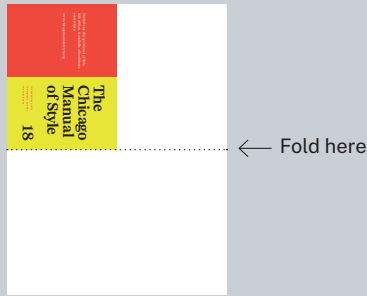
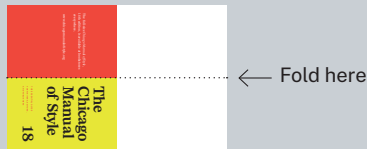


How to fold your
**Chicago Manual of Style
Decorative Minibook**

Step 1



Step 2



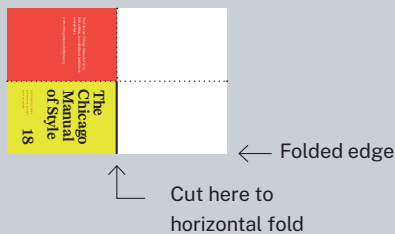
Step 3



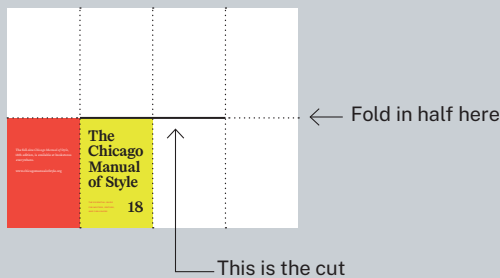
Step 4

Unfold so it looks like
Step 2 again

Step 5

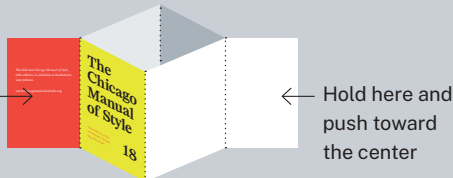


Step 6



Step 7

Hold here and
push toward
the center



Fold over so front cover is on the front and back cover is on the back. Punch hole in upper left-hand corner if you want to add a ribbon. Enjoy your new minibook!

THE CHICAGO MANUAL OF STYLE DECORATIVE MINIBOOK

In the spirit of the holiday season, we offer to you, our fans and subscribers, a special decorative minibook of *The Chicago Manual of Style*. Follow the instructions at left to create your very own minibook, suitable for adorning Christmas trees or Festivus poles, bulletin boards, office lamps, or cubicle frames. Attach your own ribbon and you are ready to go! And don't forget to purchase full-size copies of the 18th edition for yourself and your writer and editor friends. It's the perfect gift for anyone who works with words, and it's available at bookstores everywhere.

www.chicagomanualofstyle.org

The Chicago Manual of Style is also available online as an annual subscription. Completely searchable and easy to use, *The Chicago Manual of Style Online* is available to individuals and organizations of all shapes and sizes, as well as to academic, private, and public libraries through annual IP-based subscriptions. Subscribers receive full access to the eighteenth and seventeenth editions of the Manual, as well as special access to our Users Forum and features such as bookmarks, notes, and style sheets.

The Chicago Manual of Style Online

AVAILABLE ONLINE AS AN ANNUAL SUBSCRIPTION

© Chicago Manual of Style

✉ ChicagoManual@uic.edu

✉ ChicagoManual@uic.edu

Chicago Manual of Style

Chicago Manual of Style

Chicago Manual of Style

Chicago Manual of Style

Chicago Manual of Style

Chicago Manual of Style

Chicago Manual of Style

Chicago Manual of Style

Chicago Manual of Style

Chicago Manual of Style

Chicago Manual of Style

Chicago Manual of Style

Chicago Manual of Style

Chicago Manual of Style

Chicago Manual of Style

Chicago Manual of Style

Chicago Manual of Style

Chicago Manual of Style

Chicago Manual of Style

Chicago Manual of Style

Chicago Manual of Style

Chicago Manual of Style

Chicago Manual of Style

Chicago Manual of Style

Chicago Manual of Style

Chicago Manual of Style

Chicago Manual of Style

Chicago Manual of Style

Chicago Manual of Style

Chicago Manual of Style

Chicago Manual of Style

Chicago Manual of Style

Chicago Manual of Style

Chicago Manual of Style

Chicago Manual of Style

Chicago Manual of Style

Chicago Manual of Style

Chicago Manual of Style

Chicago Manual of Style

Chicago Manual of Style



The full-size *Chicago Manual of Style*, 18th edition, is available at bookstores everywhere.

www.chicagomanualofstyle.org

THE ESSENTIAL GUIDE FOR WRITERS, EDITORS, AND PUBLISHERS

18

The Chicago Manual of Style

Every chapter has been reexamined with diversity and accessibility in mind, and major changes include updated and expanded coverage of pronoun use and inclusive language, revised guidelines on capitalization, a broader range of examples, new coverage of indigenous languages, and expanded advice on making publications accessible to people with disabilities. The Manual's traditional focus on nonfiction has been expanded to encompass fiction and other creative genres, and the needs of self-published authors also receive wider attention.

The digital chapter has been thoroughly reorganized for the benefit of new and experienced users alike, and key concepts for editing fundamentals have been integrated into the chapters where they will be most useful to generalists. Proving technologies—including open-access publishing models and AI—are covered throughout. And naturally, there are some well-considered updates to familiar rules, including changes intended to align the Manual's recommendations more closely with real-world usage.

As with every new edition, devotees of the Manual will find much to discover and ponder.

THE VENERABLE TIME-TESTED GUIDE TO STYLE USAGE AND GRAMMAR—AN INDISPENSIBLE REFERENCE INFORMING THE EDITORIAL CANON WITH SOUND DEFINITIVE ADVICE

Much has happened in the years since the publication of the seventeenth edition of *The Chicago Manual of Style*. The world has transformed, and the Manual has risen to meet the moment. The eighteenth edition of this classic guide for writers, editors, and publishers is the most extensive revision in two decades.

Every chapter has been reexamined with diversity and accessibility in mind, and major changes include updated and expanded coverage of pronoun use and inclusive language, revised guidelines on capitalization, a broader range of examples, new coverage of indigenous languages, and expanded advice on making publications accessible to people with disabilities. The Manual's traditional focus on nonfiction has been expanded to encompass fiction and other creative genres, and the needs of self-published authors also receive wider attention.

The digital chapter has been thoroughly reorganized for the benefit of new and experienced users alike, and key concepts for editing fundamentals have been integrated into the chapters where they will be most useful to generalists. Proving technologies—including open-access publishing models and AI—are covered throughout. And naturally, there are some well-considered updates to familiar rules, including changes intended to align the Manual's recommendations more closely with real-world usage.

As with every new edition, devotees of the Manual will find much to discover and ponder.

The Chicago Manual of Style

EIGHTEENTH EDITION

The University of Chicago Press
Chicago and London

Compounds and Hyphenation 8.96

4. WORDS FORMED WITH PREFIXES (continuing)	(pennin)chobol
micro	microcosmic, microcosmicity
mid	See section 3.
mini	miniatur, miniaturist
multi	multilateral, multilateralism, but multi-institutional
neo	neonatic, neoribodox, Neoplantinism, neo-Nazi (use lowercase or capital and hyphenated as in dictionary; lowercase and hip phonetic /no/ in dictionary)
non	nonbinary, non-bisexual, non-event, nonnegotiable, but non-beer-drinking
over	overqualified, overbooked, overconfident
post	postcolonial, postmodernism, but post-traumatic, post-Vietnam, post-World War II (see 6.80)
pre	premodern, pre-negotiation, pre-war, pre-war, but pre-suburban, pre-Columbian, Pre-Raphaelite (pre lowercase or capital as in dictionary; lowercase if term is not in dictionary)
pro	proactive, pro-industrial, pro-market, but pro-choice, pro-life, pro-Canadian
proto	protolinguistic, protolinguistics, protohistory†
pseudo	pseudoclassicism, pseudomodern, but pseudo-hybrid
re	re-cited, re-crafty, re-representative, but re-over, re-cranked (for distinct from across, re-creation)
semi	semipacific, semiconductors, but semi-trail
sub	subbasement, subbers, subcutaneous
super	superannuated, superaffinity, superpowerful
supra	supranational, supranational, supranational, but supra-American
trans	transgender, trans-shipment, transnational, trans-continental, trans-Atlantic, but trans-American, trans-pennine (trans in italics), trans fat, trans man, trans woman (trans as adjective)
ultra	ultra-elitist, ultra-organized, ultra-organizational
un	un-fined, un-motivated, but un-British, un-ambitious
under	underemployed, undermale, under-tenant

FORMING ACCORDING TO CATEGORY 1. COMPOUNDING, DISTINGUISHING, SPELLING, FELLING, AND COMPOUNDING OF DERIVATIVE 4.78

1. COMPOUNDING ACCORDING TO CATEGORY	
1. COMPOUNDING	Open in both in noun and adjective forms
adjective	emerald green, the red-brown, blue-green, snow-white dress, black-and-white print, his tie is emerald green, the water is blue-green, the traffic light is black and white
chemical compounds	sodium chloride, sodium chloride solution
color	emerald green, the red-brown, blue-green, snow-white dress, black-and-white print, his tie is emerald green, the water is blue-green, the traffic light is black and white
compound nouns and directions	Closed in noun, adjective, and adverb forms unless the directions are compound, in which case a hyphen is used after the first. When /non-.../ is implied, it is written in black (see 6.83).
ethnic terms	See proper nouns and adjectives relating to nationality or nationality in section 7.
foreign phrases	See non-English phrases.
fractions, compounds formed in it	a half-hour, a half-dozen
number	a quarter mile, an eighth note